



CCCD EXPRESS



C O N V E R S E C O U N T Y C O N S E R V A T I O N D I S T R I C T

Board of Supervisors

Johnie Pickinpaugh
Chairman

Stan Mitchem
Vice-Chairman

Don Wagoner
Secretary/Treasurer

Shelly Falkenburg
Member

David Claus
Member

District Staff
Michelle Huntington,
District Manager

Ronni Wahl,
District Clerk

NRCS
Tim Schroeder,
District Conservationist

Johnna Blankenship,
Range Conservationist

INSIDE THIS ISSUE:

Household Hazardous Waste Day	1
NRCS News	2
Homemade Cleaning Solutions	2
District Happenings	3
Education Opportunities	3
WNRF 4-Wheeler Raffle	4
Fall Planting For Spring Flowers	4

HOUSEHOLD HAZARDOUS WASTE AND PESTICIDE COLLECTION DAY

SATURDAY, SEPTEMBER 19, 2009

FREE!

Items that are collected during HHW Day will be recycled, safely incinerated or deposited into an approved hazardous waste landfill. A brief listing of items being accepted at HHW Day are listed below. If you are not sure if a product is hazardous, look for labels that state the item is toxic, poisonous, flammable or corrosive. If you have questions about a specific item, please call the District office at 358-3050.



COLLECTION SITES:

DOUGLAS—WYOMING STATE FAIRGROUNDS
10 A.M. TO 2 P.M.

GLENROCK—GLENROCK TOWN PARK
9 A.M. TO 12 P.M.

ACCEPTING:

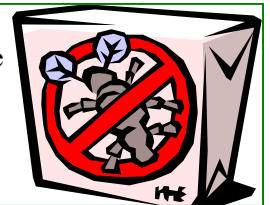
Paint, Batteries (Household & Automotive), Pesticides/Herbicides, Solvents, Aerosols, Antifreeze, Small Quantities of Motor Oil



NOT ACCEPTING:

Computers, Tires, Explosives, Propane Cylinders and Tanks, Radioactive Material, Appliances, Iron, Wood or Paper.

Converse County residents are encouraged to check their garages, basements, storage cabinets and other storage areas for hazardous materials that may have outlived their useful life, or have been stored for an extended period of time such that the containers are deteriorated or not safe to handle any longer. Please share the word about this great opportunity to do something for the environment of our community!



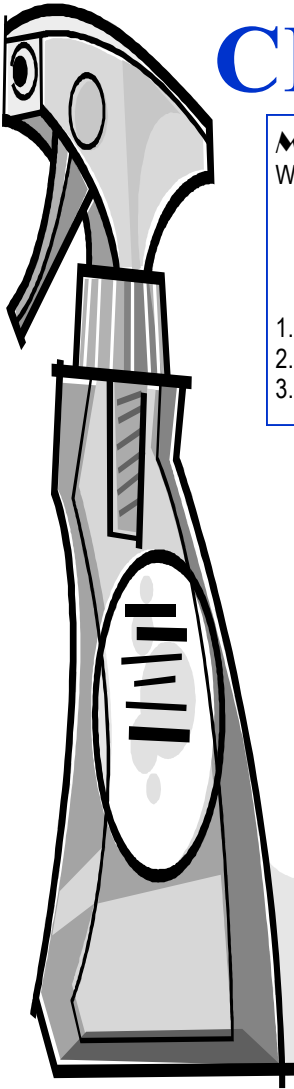
VOLUNTEERS NEEDED!

Volunteers are needed at the Douglas and Glenrock sites. Beverages, food and special gifts are provided to all volunteers. Help is needed to help set up for the event Saturday morning and throughout the day at both locations. Please call Michelle at 358-3050 ext. 4 if you are able to help!

A BETTER

CLEAN

Say good-bye to “hazardous” store-bought cleaning supplies! These homemade versions are environmentally friendly, easy to make and work great!



Multipurpose Cleaner

When it comes to cleaning non-wood surfaces around your home, this cleaner is tough to beat.

- 1 1/2 pints water 1/3 cup rubbing alcohol 1 tsp. clear household ammonia
- 1 tsp. mild dishwashing liquid 1/2 tsp. lemon juice

1. Combine the ingredients in the spray bottle and shake well before each use.
2. Spray on countertops, kitchen appliances and fixtures, and tile or painted surfaces.
3. Wipe down with a clean cloth or damp sponge.

Window and Glass Cleaner

Made of ingredients you already have at home, this formula includes alcohol to keep glass from streaking.

- 1/3 cup white vinegar 1/4 cup rubbing alcohol 3 1/2 cups water

1. Mix all ingredients in a clean, 32-ounce spray bottle. Shake well before using.
2. Spray on dirty windowpane or other glass surface.
3. Dry with crumpled newspaper.

Dishwashing Liquid

This dishwashing soap is for hand-cleaning kitchenware at the sink. It is bold with grease but gentle on hands.

- 1/4 cup soap flakes 1 1/2 cups hot water 1/4 cup glycerin 1/2 tsp. lemon oil

1. To make the soap flakes, lightly grate a bar of pure soap, such as Ivory, on a coarse kitchen grater.
2. In a medium pitcher, pour the soap flakes into the hot water and stir with a fork until most of the soap has dissolved. Let the solution cool for 5 minutes.
3. Stir in the glycerin and lemon oil. A loose gel will form as it cools. Use the fork to break up any congealed parts and pour the liquid into a clean, 16-ounce squirt bottle. Use 2 to 3 teaspoons per sink or dishpan of hot water to clean the dishes.

NRCS NEWS-TIM SCHROEDER

NOW'S THE TIME TO SIGN UP FOR 2010 EQIP

A cut off or batching date for the 2010 EQIP (Environmental Quality Incentives Program) will likely be announced for sometime this fall. So now's the time to get your applications in for the 2010 EQIP program benefits. EQIP is the backbone of cost-share assistance for rangeland practices, irrigation improvements, forestry practices and wildlife habitat development.

Ag producers interested in EQIP are encouraged to sign up at the NRCS office and also to update their annual farm records for the 2010 program year with the Farm Service Agency (FSA).

Contact the local Douglas NRCS field office with any questions at 358-3050 ext. 3

UNITED STATES DEPARTMENT OF AGRICULTURE'S EQUAL EMPLOYMENT OPPORTUNITY POLICY

The U.S. Department of Agriculture (USDA) prohibits discrimination in all its programs and activities on the basis of race, color, national origin, sex, religion, age, disability, political beliefs, sexual orientation, or marital or family status. (Not all prohibited bases apply to all programs). Persons with disabilities who require alternative means for communication of program information (Braille, large print, audiotape, etc.) should contact USDA's TARGET Center at (202) 720-2600 (voice and TDD). To file a complaint of discrimination, write USDA, Director, Office of Civil Rights, Room 326-W, Whitten Building, 1400 Independence Avenue, SW, Washington, D.C. 20250-9410, or call (202) 720-5964 (voice or TDD). USDA is an equal opportunity provider and employer.

DISTRICT HAPPENINGS



Converse County Conservation District Staff and Board Members manned the CCCD/WACD booth through-out the week of Wyoming State Fair held August 8-15. We had an opportunity to talk to people from across the state about conservation efforts and programs. Thank you to Anita Bartlett (PRCD), Maggie Myers (NCCD), Dawn Arnell (LSRCD) and Liz Barton (LRCD) for making the drive and taking the time to help as well!

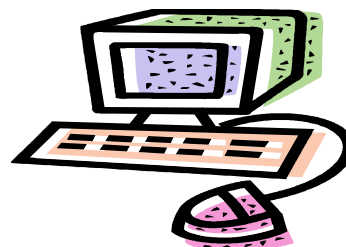
New to this years' festivities was the district's participation in the State Fair parade. Thanks to Supervisor Don Wagoner for chauffeuring us in his "sweet" ride!

Congratulations to our daily drawing winners and good luck to everyone who donated to the WNRF and has a chance at winning the 4-wheeler in November!



ATTENTION HUNTERS!

Converse County Conservation District has USGS Topo Maps (Converse County only) available for purchase at the district office. Maps are \$8.00 each. Contact CCCD for more information.

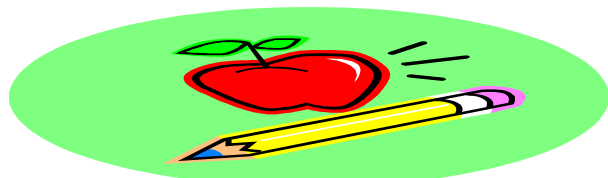


We invite you to visit the CCCD website!
www.conserveconverse.org

It's a work in progress including some familiar District information, events and special occasions, past newsletters and program information. You are encouraged to suggest things you would like to have included on the website or provide news or pictures. The District would like the website to reflect you and your conservation accomplishments, ideas or goals. Please join us in using the website as another great way to stay informed!



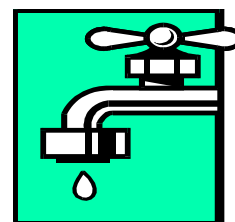
It's back to school time and that means we are putting our youth education programs back into full swing! We will be at the Douglas Library on September 24th at 3:30 p.m. and in Glenrock at the library on September 29th at 2:30 p.m.



TEACHERS AND YOUTH EDUCATORS!!

CCCD would like to assist you in promoting agriculture in the classroom. We have a number of resources available on topics such as animal identification, water quality, trees, weeds and landscaping (to name just a few!). We are always more than willing to come to your classroom or meeting to help in any way we can! Call Michelle or Ronni at 358-3050 ext. 4

WORLD WATER MONITORING DAY



World Water Monitoring Day (WWMD) is an international education and outreach program that builds public awareness and involvement in protecting water resources around the world by engaging citizens to conduct basic monitoring of their local water bodies.

WWMD is officially celebrated on September 18; however we are observing World Water Monitoring all of September. Last year, Converse County Conservation District tested the waters of the North Platte River along with local students.

Water is tested on-site for temperature, pH, dissolved oxygen and turbidity.

September dates are being scheduled now for this years' testing. If your classroom or group would like to be involved in the education and testing this year please contact Michelle at Converse County Conservation District.



www.conserveconverse.org

**CONVERSE COUNTY
CONSERVATION
DISTRICT**

911 S. Windriver Drive
Douglas, WY 82633

Phone: 307-358-3050 ext. 4
Fax: 307-358-5719

E-mail: michelle.huntington@wy.nacdnet.net

UPCOMING EVENTS

SEPTEMBER:

- 7: Labor Day—CCCD Office Closed**
- 10: WACD Area II Meeting**
- 17: RC&D Meeting—Wheatland**
- 17: CCCD Board Meeting**
- 18: World Water Monitoring Day**
- 19: Household Hazardous Waste Day**

OCTOBER:

- 12: Columbus Day—Office Closed**
- 15: CCCD Board Meeting**

Presorted Standard US

Postage

Paid

Douglas, WY

Permit No. 13

ATTEND A CCCD BOARD MEETING

The Converse County Conservation District holds Board Meetings the third Thursday of each month starting at 6:00 p.m.

We welcome your input, ideas, questions, and concerns regarding our projects and programs!

Meetings are open to the public pursuant to Wyoming Statute 16-4-403.

**—WIN A 2008 POLARIS SPORTSMAN 500 EFI ATV—
WYOMING NATURAL RESOURCE FOUNDATION RAFFLE**

The Wyoming Natural Resource Foundation (WNRF) is an organization dedicated to conserving Wyoming's natural resources, heritage and culture. The WNRF is a sister organization to the Wyoming Association of Conservation Districts, of which CCCD is a member, and has established partnerships with many local, state and federal agencies, as well as private and volunteer organizations. The WNRF works closely with local conservation districts to protect the multiple uses of Wyoming's resources. Each year, the WNRF conducts a fundraising campaign. As part of this year's fundraising effort, a \$25.00 tax deductible donation enters you in a drawing to win a 2008 Polaris Sportsman 500 EFI ATV. A maximum of only 500 tickets will be sold. The drawing will be held in November during the WACD/WNRF state convention in Cheyenne. To buy a ticket, contact the Converse County Conservation District.



- On-Demand AWD
- 1500 lb Towing Capacity
- Long-travel MacPherson Front Suspension
- Premium PXT Radial Tires
- All Factory Warranties In Place

FALL PLANTING TIPS FOR SPRING FLOWERS



September is a good time to plant fall bulbs, such as tulips, daffodils, crocus, lilies and hyacinth. Make sure to purchase quality bulbs that are clean, show no signs of disease and are firm and healthy. The earlier the bulbs are purchased, the better the selection.

The rule of thumb for planting depth of bulbs is four times the height of the bulb, measured from the soil surface to the top of the bulb. That means that for daffodils, the tip of the bulb should be somewhere around 7 inches below the surface; lilies, 6 to 8 inches; tulips, 5 to 7 inches; hyacinth, 4 inches; grape hyacinth, 4 inches; and crocus, 3 to 4 inches.

Depth of planting also depends on soil type. In heavier clay soils, don't plant quite as deeply. Plant larger bulbs approximately 1 inch shallower and smaller bulbs 1/2 inch shallower.

Adding organic matter, such as compost, and incorporating a complete, slow-release fertilizer containing nitrogen, phosphorus and potassium into the soil will yield better growth and development results.

After planting, make sure to thoroughly water the area. Keeping the area moist after planting and during the winter will aid in the survival and health of the plants. (Excerpted from UWCES bulletin—Karen Panter)